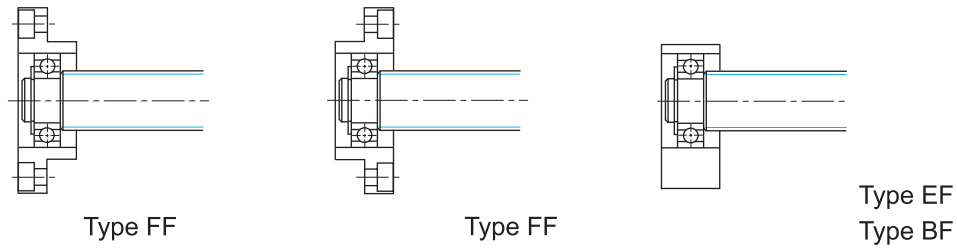


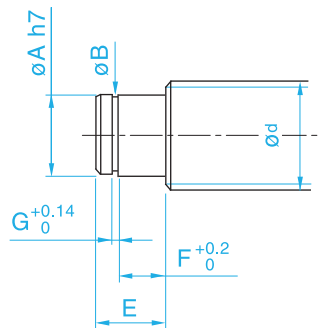
Recommended Shaft End Shape For Support Unit Types FF and EF and BF Floated Side



Unit:mm

| Support Unit model No. | | | Ball Screw shaft OD | Shaft Support Portion OD |
|------------------------|---------|-------------|---------------------|--------------------------|
| Type FF | Type EF | Type BF | d | A |
| FF 10 | EF 10 | BF 10 | 12/14/15 | 8 |
| FF 12 | EF 12 | BF 12 | 14/15/16 | 10 |
| FF 15 | EF 15 | BF 15 | 18/20 | 15 |
| FF 17 | — | BF 17 | 20/25 | 17 |
| FF 20 | EF 20 | BF20 (NOTE) | 25/28/30 | 20 |
| FF 25 | — | BF 25 | 30/32/36 | 25 |
| FF 30 | — | BF 30 | 36/40 | 30 |
| — | — | BF 35 | 40/45 | 35 |
| — | — | BF 40 | 50 | 40 |

Support Unit of Ball Screw



Note:

In this table, dimensions in parentheses are those of type BF20. These dimensions differ from those of type FF20 and EF20. When placing an order, always specify the model number of the Support Unit to be used.

Unit:mm

| E | Snap-ring Groove | | |
|--------|------------------|--------|------|
| | B | F | G |
| 10 | 7.6 | 7 | 0.9 |
| 11 | 9.6 | 8 | 1.15 |
| 13 | 14.3 | 9 | 1.15 |
| 16 | 16.2 | 12 | 1.15 |
| 19(16) | 19 | 14(12) | 1.35 |
| 20 | 23.9 | 15 | 1.35 |
| 21 | 28.6 | 16 | 1.75 |
| 22 | 33 | 17 | 1.75 |
| 23 | 38 | 18 | 1.75 |